

# kiekert

TECHNOLOGY THAT LEADS

## **excellENTRY: ENABLING FUTURE ACCESS**

Advanced electric door latch system.



PROTECT



MOVE



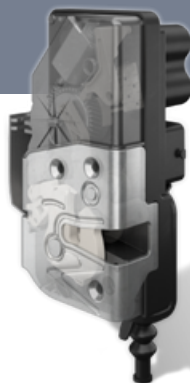
CONNECT



## excellENTRY: FREEDOM, REDESIGNED

The Kiekert excellENTRY enables effortless operation of the car door handle by eliminating the mechanical operation chain. This results in new design possibilities for the door, including a flush door design. A mechanical or electrical redundancy function allows manual opening of the vehicle doors even in case of a power failure or a crash situation. The system can be equipped with additional functions such as automatic opening.

The Kiekert excellENTRY enables a large variety of new access solutions and will be the basis for future door and closure systems.



### BENEFITS AT A GLANCE

- › Extended design possibilities
- › Variety of functions and basis for future access solutions
- › Small installation space and low weight
- › Choice of mechanical or electrical redundancy
- › High operational reliability

### EVERYDAY ADVANTAGES

- › Effortless door opening
- › Good acoustics through double pawl system
- › New design possibilities (no door handles / sensor opening)